

JOHNSON HUMPER 8EF10

MAXIMUM LOAD 1 TON (1016kg) to 10ft. (3048mm)



Fork lift — for unloading, transporting and elevating bricks, lintels, timber, joinery, plasterboard, etc.



Humper — Maximum discharge height — skip tipped — 7 ft 6 in



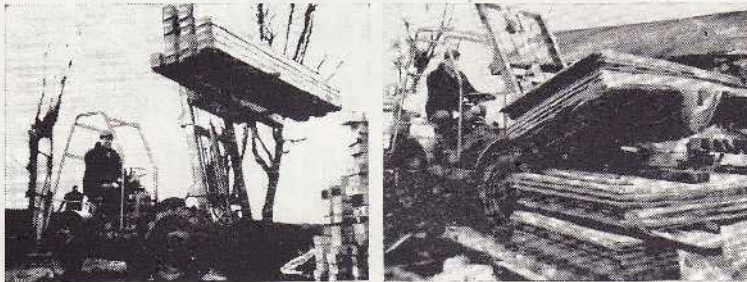
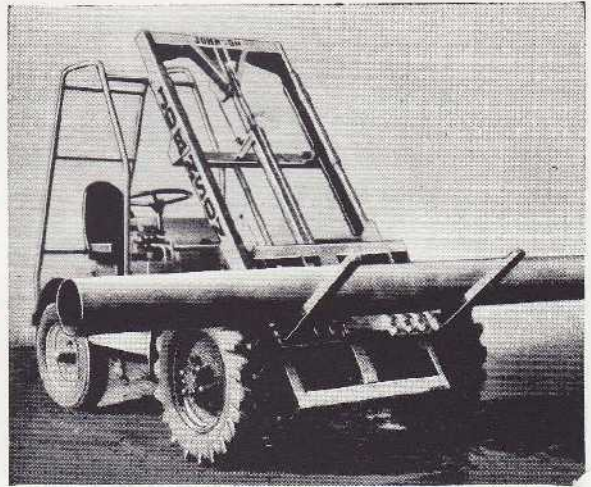
Waste handling.

**the
contractors
mechanical
handling
machine**

NOTE: A MODEL 7EF14 HUMPER IS ALSO NOW AVAILABLE. THIS IS GENERALLY SIMILAR TO THE 8EF10 BUT LIFTS A MAXIMUM LOAD OF 1 TON (1016 kg.) TO 14 FT. (4267 MM.). BOTH THE 8EF10 AND THE 7EF14 WILL LIFT 1.5 TONS (1524kg.) TO 6 FT. (1828 MM).

JOHNSON HUMPER FORK LIFT

As a fork lift the Humper can be used to off-load lorries, stack timber and handle cladding panels and pre-cast concrete components — just a few of its many uses. The ability of the Humper to rake its mast back through 40° ensures stability of the load in transit. The width between the forks is adjustable.



Length of forks: 28 in or 45 in (762 mm or 1230 mm)

Maximum height of lift: 10 ft (3048 mm)

Maximum loads:

At 11 in (300 mm) from face of carriage	1 ton (1016 kg)
At 28 in (762 mm) from face of carriage	12 cwt (610 kg)
At 37½ in (1025 mm) from face of carriage	10 cwt (508 kg)
At 45 in (1230 mm) from face of carriage	8 cwt (406 kg)

JOHNSON HUMPER AS A CRANE



As a mobile crane for handling pipes, banded bricks and pieces of machinery which cannot be conveniently handled on forks.

Maximum load on inner hook:

(11 in (300 mm) from face of carriage) 1 ton (1016 kg)

Maximum load on outer hook:

(37½ in (1025 mm) from face of carriage) 10 cwt (508 kg)

Maximum height under hook: 11 ft 3 in (3690 mm)

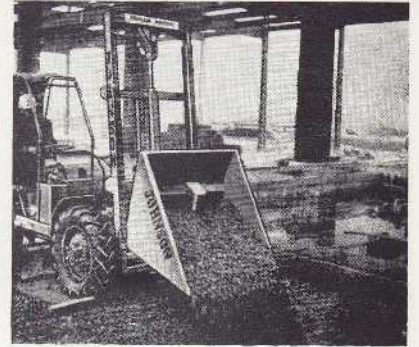
JOHNSON HUMPER AS A DUMPER



The Humber can be fed by a mixer or ready-mixed transporter.

STANDARD DUMPER SKIP "A"

Struck capacity:	17½ cu ft (496 litres)
Minimum loading height:	2 ft 9 in (902 mm)
Maximum discharge height fully tipped:	7 ft 6 in (2460 mm)
Width of skip:	3 ft 10 in (1257 mm)



Skip A.

JOHNSON HUMPER SKIP VARIATIONS

Skip B.



As a high-discharge, hydraulic tipping dumper. Ground clearance when fully tipped 7 ft. 6 in.

Special concrete tipping skip devised to prevent contents of skip overflowing before skip is properly positioned over discharge point. It has 12 in. high door which gives the skip a wet level capacity of 11 cu ft with the mast vertical and the bottom of the skip parallel with the ground. Skip B is similar to skip A but has a toggle-operated door to give controlled discharge.

Free standing tipping skips C are stationed about the site or factory to receive rubbish, scrap, swarf, etc. When full, they are automatically picked up by the Humber, the contents tipped into vehicles or dump and the empty skip returned for refilling.

The skip can be discharged under control, up to a maximum height of 6 ft. 10 in.

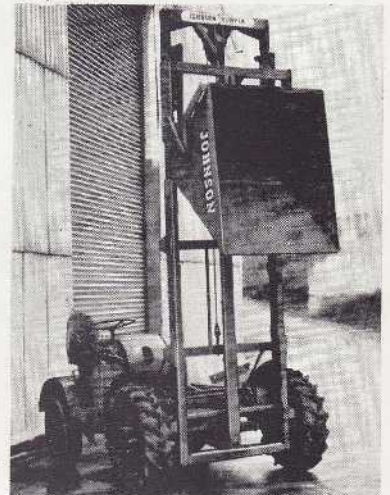
Struck capacity:	19 cu ft (538 litres)
Maximum payload:	13 cwt (660 kg)
Length:	4 ft 3 in (1440 mm)
Width:	3 ft 6 in (1149 mm)
Height:	2 ft 4 in (762 mm)

Skips in other shapes, sizes and capacities can be produced to suit any particular requirement.

Multi-skip concrete handling with free-standing, bottom discharge crane skips D in conjunction with 28 in long forks.

Wet level capacity:	14 cu ft (397 litres)
Loading height:	3 ft 5 in (1120 mm)
Maximum discharge height on Humber:	8 ft (2625 mm)
Weight unladen:	465 lb (211 kg)

Skip C.



Skip D.



Skip C.

Mobile free standing skip.

All Humber Attachments

All Humber attachments can be quickly interchanged by the driver without tools or fitting skill.

When not in use, the forks and crane jib are carried on the Humber Chassis, thus reducing the risk of loss or damage.

SPECIFICATION

CHASSIS

A steel fabricated double frame of extremely rugged construction with members 4 in. x 2 in. rolled steel channels, with engine and axle mountings of rugged dimensions. A strong rear bumper bar with tow hitch is fitted.

ENGINE

Perter PH2 or Lister SR3 with gear driven hydraulic pump.

CLUTCH

9 in. (22 mm.) single dry plate, solid drive centre plate.

GEARBOX

Constant mesh type with three forward gears and one reverse.

SPEEDS

Vehicle speeds at 1800 r.p.m. are:

Top gear 12 m.p.h., 2nd 6.6 m.p.h., 1st 2.8 m.p.h., reverse 3.2 m.p.h.

PROP SHAFT

Special heavy duty with shock absorbing universal couplings at both ends.

DRIVE AXLE

Fully floating with double reduction gear head. Magnetic drain plug, large accessible oil filler. This axle is unique in its serviceability, the complete final drive assembly can be withdrawn from the axle as a complete unit, half shafts can be directly withdrawn, and the brake drums removed for inspection simply by taking off the wheel. The design ensures long trouble-free service.

STEERING

Adjustable worm and peg of robust construction with heavy duty rigidly braced steering column. Steering axle is centre pivoted, profiled from 2 in. solid steel plate and is designed for site work. Stub axles and all steering linkages are heat treated nickel chrome steel drop forged.

DRIVING WHEELS

$\frac{3}{8}$ in. plate, heavily reinforced at the centre and secured by six $\frac{7}{8}$ in. dia. high tensile studs with cap nuts.

TYRES

Driving wheels: 7.50 x 20 8-ply tractor type.

Steering wheels: 6.00 x 16 6-ply ribbed type.

BRAKES

12 in. x 3 in. (305 mm. x 76 mm) drum brakes on drive axle, hydraulically-operated from foot pedal. Hand-operated disc-type transmission parking brake. Four wheel brakes optional extra.

CONTROLS

Handbrake, footbrake, foot throttle, foot clutch. Three two-way hydraulic controls. Raise and lower carriage—Rake Mast—Extend and retract auxiliary lifting ropes, which actuate tipping skip or free hook.

HYDRAULICS

PUMP

Gear pump is directly mounted to the timing case of the engine and is driven from the timing gears, the gear train being completely dust free and running in the engine oil supply.

CIRCUIT

The pump is connected by steel piping to the integral bank of three two-way hydraulic control valves mounted directly on top of the hydraulic oil tank, immediately in front of the driver. All non-moving hydraulic piping is in solid drawn steel.

RAMS

One main Lifting Ram—single acting expanding. Two Mast Raking Rams—double acting. One auxiliary to free rope—double acting.

MUDGUARDS

Fitted to all wheels to protect driver and machine.

ENGINE CANOPY

Designed to permit day-to-day access without removal but quickly detachable for engine maintenance.

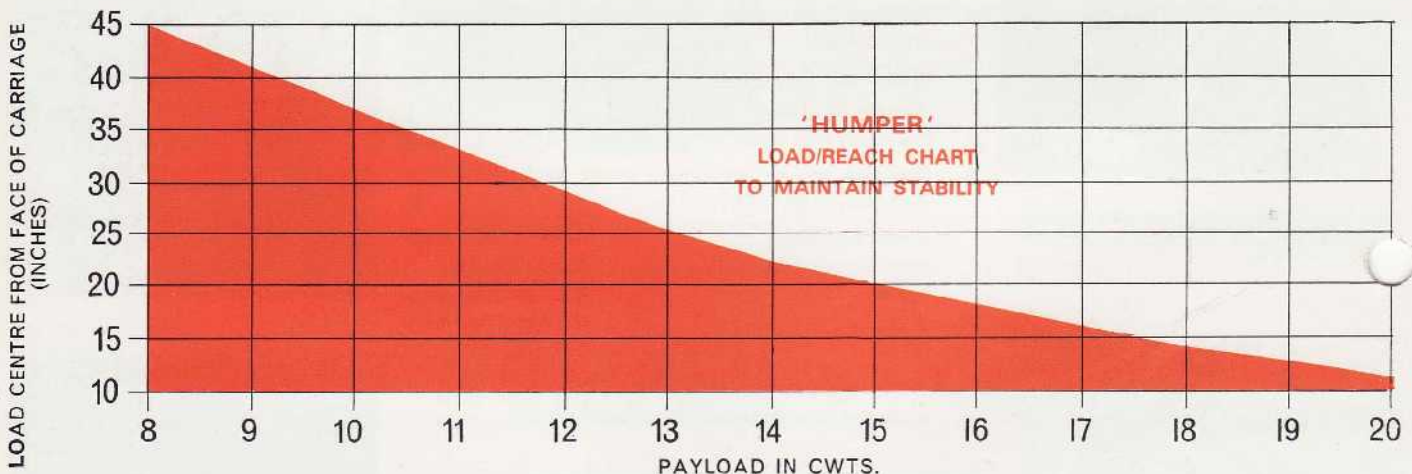
DRIVER'S SEAT

Semi-upholstered on pedestal.

ROAD USE IN THE U.K.

The Humper can be licensed for use on the public highway. (Note: The load must not obscure the driver's view).

We can supply number plates, horn, mirror and licence holder and when required, electric starting and lighting.



JOHNSON MACHINERY



Johnson Machinery Limited,
Johnson Works, Adswold, Stockport SK3 8LG, England
Telephone: 061-480 2642 Telex: 667297

Spares and Service Department:
Telephone: 061-480 0654. Telex: 667297.

Johnson Regional Sales Offices:
London—01-622 0288, Glasgow—041-776 3355,
Yorkshire—Wetherby (0937) 3737

See Johnson Regional Four Point Service Leaflet for full spares and service facilities—Nationwide
In accordance with our policy of continual improvement we reserve the right to modify these machines without notice.